

The Brush

THE RED LINE EDITION



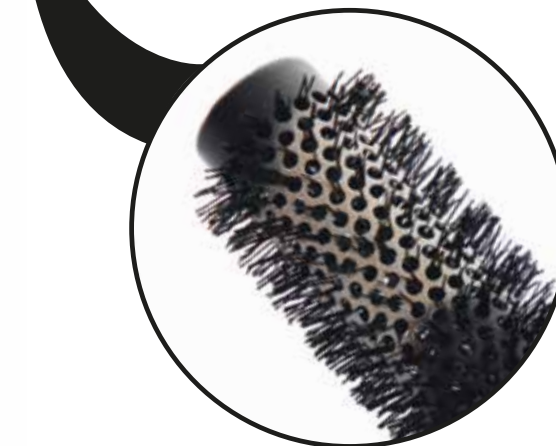
Thermochromic Barrel Brush

Fixed Nylon Fine Toothed Combs are ideal for the application of conditioning treatments, evenly sectioning the hair for greater concentrated distribution.

- Thermochromic Colour Change Body shows the working temperature and ionic effect. The ceramic barrel emits negative ions when hot and retains heat while styling.
- The Soft Fluted Handle moulds to the hand, ergonomically designed for extra comfort and grip.
- Soft Sealed Bristles flame sealed to help prevent damage to the hair and tearing of the cuticle.



FIXED NYLON FINE TOOTH COMB
APPLY KERATIN TREATMENTS EASILY



THERMOCHROMIC BODY
COLOUR CHANGE TECHNOLOGY

**Colour
Change
Body** 

The Brush



Thermochromic Barrel Brush

Corioliss present The Brush, with a thermochromic colour change body and a light ceramic barrel that emits negative ions when hot. The soft fluted handle and unique detachable pin for sectioning gives the ultimate in comfort and professional styling.

- Thermo-chromic colour change body shows working temperature and ionic effect
- Individual flame sealed fibres protects the cuticle
- Removable section pin in handle
- Available in XX Small, X Small, Small, Medium and Large.

